

Call: +44 (0)1276 685544



## Adonis Close, Camberley, Surrey, GU16 9AD

A wonderfully presented four bedroom detached home, constructed to a high standard in 2016, this home has been greatly improved by the current owners including an upgraded kitchen, professional decoration and extensive landscaping. The ground floor offers a spacious entrance hall leading into living room with feature bay window. To the rear of the property is a fantastic sized open plan kitchen/living space. This modern living space is extremely versatile and well lit with several windows, patio doors and a feature roof lantern. There is also a downstairs cloakroom and the bonus of a new utility room with access to the garden and into the garage. To the first floor there is a spacious landing with airing cupboard, double master bedroom at the rear of the property with an en suite and fitted wardrobes, double second bedroom with feature bay window and fitted wardrobes, third double bedroom over the garage with sliding door wardrobes, fourth single bedroom and the four piece family bathroom.

Price: £675,000

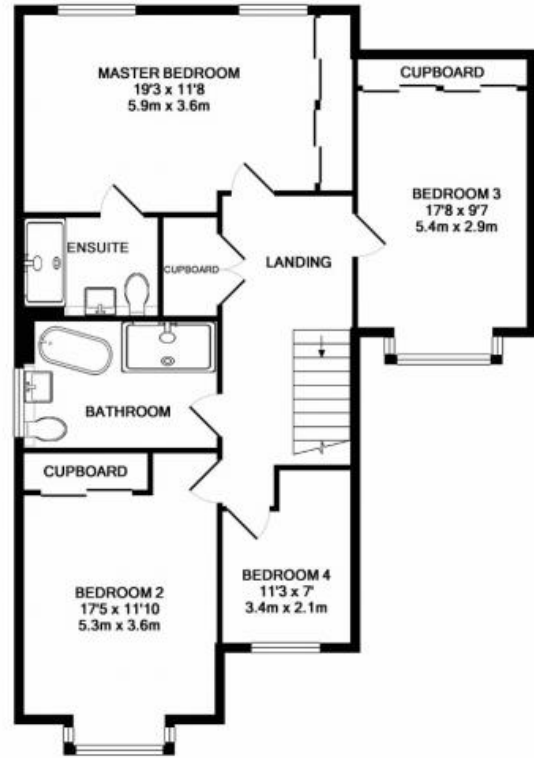
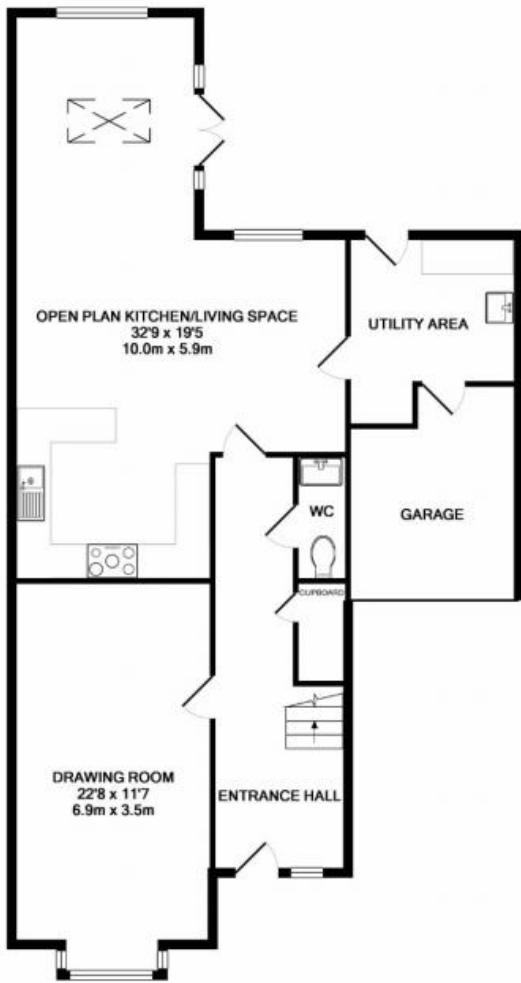
### Overview

- Four Bedrooms
- Linden Home Built 2016
- Approx.125ft Garden
- Open Plan Living
- Luxury Fittings
- Tomlinscote Catchment
- Vendor Suited
- EPC Rating : B (85)
- Freehold

Call: +44 (0)1276 685544



Call: +44 (0)1276 685544



TOTAL APPROX. FLOOR AREA 2114 SQ.FT. (196.4 SQ.M.)  
 Whilst every attempt has been made to ensure the accuracy of the floor plan contained here, measurements of doors, windows, rooms and any other items are approximate and no responsibility is taken for any error, omission, or mis-statement. This plan is for illustrative purposes only and should be used as such by any prospective purchaser. The services, systems and appliances shown have not been tested and no guarantee as to their operability or efficiency can be given.  
 Made with Metapix ©2019