

Call: +44 (0)1276 685544



Doveton House, Frimley, Surrey, GU16 8UH

Situated within a stone's throw of local shops, amenities, bus routes and schools, this ground floor apartment is offered with no onward chain complications. Presented in good order, the accommodation comprises of a living room with French doors to the rear, kitchen with integrated oven and hob, two bedrooms, en suite shower room to the master, with a further set of French doors to the rear and various storage cupboards.

Price: £225,000

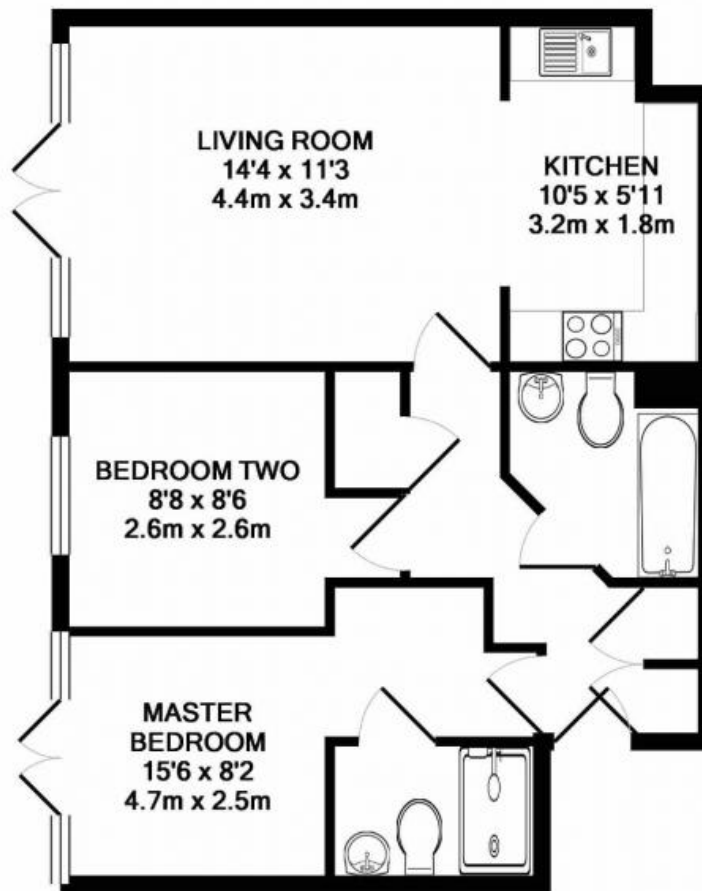
Overview

- Ground Floor Apartment
- Two Bedrooms
- En Suite to Master
- Two Sets of French Doors to Rear
- No Onward Chain
- Close to Amenities
- Ample Parking
- EPC Rating: C (69)
- Peaceful Location
- Leasehold

Call: +44 (0)1276 685544



Call: +44 (0)1276 685544



TOTAL APPROX. FLOOR AREA 549 SQ.FT. (51.0 SQ.M.)

Whilst every attempt has been made to ensure the accuracy of the floor plan contained here, measurements of doors, windows, rooms and any other items are approximate and no responsibility is taken for any error, omission, or mis-statement. This plan is for illustrative purposes only and should be used as such by any prospective purchaser. The services, systems and appliances shown have not been tested and no guarantee as to their operability or efficiency can be given

Made with Metropix ©2019