

Call: +44 (0)1276 685544



Hadleigh Gardens, Frimley Green, Surrey, GU16 6NJ

*** OPEN HOUSE SATURDAY 3RD AUGUST 10.00am - 12.00pm *** Situated in a cul-de-sac and within walking distance of the numerous amenities on Frimley Green, this semi-detached property is offered with no onward chain complications. The accommodation comprises of a living room, kitchen/dining room, conservatory and cloakroom. To the first floor there are three bedrooms and a family bathroom.

Price: £375,000

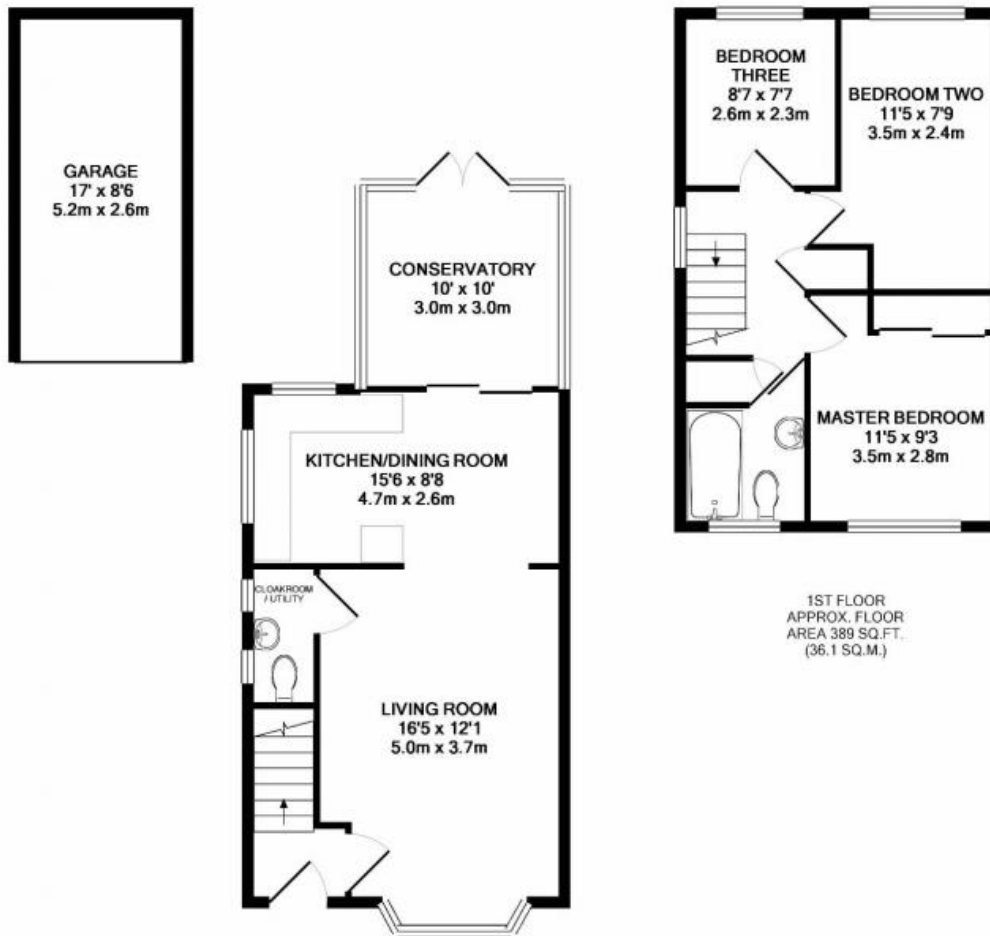
Overview

- Three Bedrooms
- Semi-Detached
- Kitchen/Dining Room
- Conservatory
- Cloakroom
- Garage
- Cul-De-Sac
- EPC Rating: D (63)
- Close to Frimley Green
- Freehold

Call: +44 (0)1276 685544



Call: +44 (0)1276 685544



1ST FLOOR
APPROX. FLOOR
AREA 389 SQ.FT.
(36.1 SQ.M.)

GROUND FLOOR
APPROX. FLOOR
AREA 641 SQ.FT.
(59.6 SQ.M.)

TOTAL APPROX. FLOOR AREA 1030 SQ.FT. (95.7 SQ.M.)

Whilst every attempt has been made to ensure the accuracy of the floor plan contained here, measurements of doors, windows, rooms and any other items are approximate and no responsibility is taken for any error, omission, or mis-statement. This plan is for illustrative purposes only and should be used as such by any prospective purchaser. The services, systems and appliances shown have not been tested and no guarantee as to their operability or efficiency can be given.
Made with Metropix ©2019