

Call: +44 (0)1276 685544



Maultway North, Camberley, Surrey, GU15 3UX

A four bedroom detached house presented in excellent decorative condition situated in a private cul-de-sac overlooking Swinley Forest and conveniently situated for quick access onto the A30 for commuting. Accommodation comprises living room with feature log burner, family room, study, kitchen/dining room and utility room. On the first floor there are four really well proportioned bedrooms, family bathroom and en suite shower room to master bedroom.

Price: £775,000

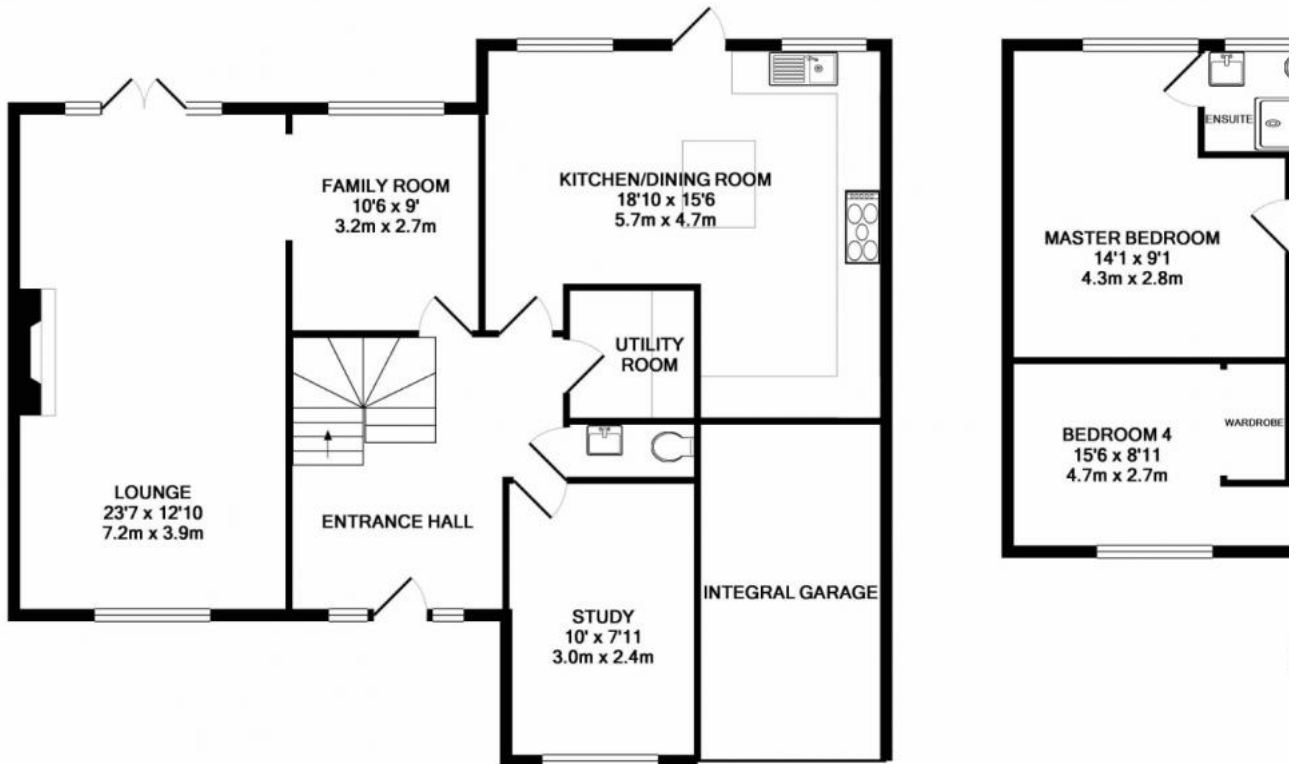
Overview

- Four Bedrooms
- Private Road
- Overlooking Swinley Forest
- Cul de Sac Location
- Potential to Extend STPP
- Garage and Driveway
- Three Reception Rooms
- EPC: D (61)
- Good Decorative Order
- Freehold

Call: +44 (0)1276 685544



Call: +44 (0)1276 685544



GROUND FLOOR
APPROX. FLOOR
AREA 1135 SQ.FT.
(105.4 SQ.M.)

TOTAL APPROX. FLOOR AREA 1883 SQ.FT. (173.8 SQ.M.)
Whilst every attempt has been made to ensure the accuracy of the floor plan of doors, windows, rooms and any other items are approximate and no responsibility is accepted for any omission, or mis-statement. This plan is for illustrative purposes only and should not be relied upon for any specific purpose. The services, systems and appliances shown have not been checked and their operability or efficiency can be given no guarantee.
Made with Metropix ©2018