

Call: +44 (0)1276 685544



Southcote Park, Camberley, Surrey, GU15 1JP

A very well presented four bedroom link detached house situated in a cul-de-sac within close proximity to Prior Heath, Ravenscote and Tomlinscote schools offered for sale with no onward chain. Accommodation comprises living room, dining room, family room and kitchen/breakfast room. On the first floor there is a master bedroom with walk-in wardrobe and en suite bathroom, two further double bedrooms and refitted family bathroom. On the second floor there is a large double bedroom or fourth reception room.

Price: £575,000

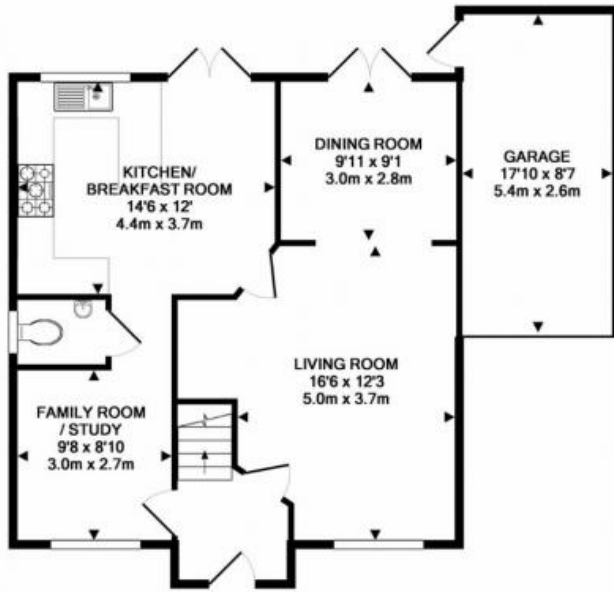
Overview

- Four Bedrooms
- No Onward Chain
- Refitted Kitchen
- Living Room
- Dining room
- Family Room
- Driveway and Garage
- EPC Rating : C (75)
- Close to Local Schools
- Freehold

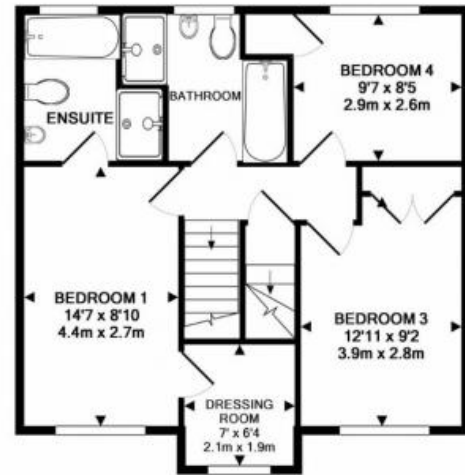
Call: +44 (0)1276 685544



Call: +44 (0)1276 685544



GROUND FLOOR
APPROX. FLOOR
AREA 789 SQ. FT.
(73.3 SQ. M.)

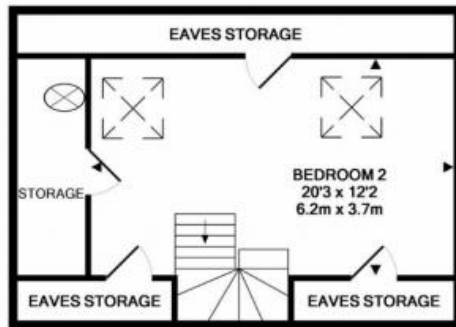


1ST FLOOR
APPROX. FLOOR
AREA 574 SQ. FT.
(53.3 SQ. M.)



TOTAL APPROX. FLOOR AREA 1781 SQ. FT. (165.5 SQ. M.)

Whilst every attempt has been made to ensure the accuracy of the floor plan contained here, measurements of doors, windows, rooms and any other items are approximate and no responsibility is taken for any error, omission, or mis-statement. This plan is for illustrative purposes only and should be used as such by any prospective purchaser. The services, systems and appliances shown have not been tested and no guarantee as to their operability or efficiency can be given.
Made with Metropix ©2017



2ND FLOOR
APPROX. FLOOR
AREA 418 SQ. FT.
(38.8 SQ. M.)