

Call: +44 (0)1276 685544



## Wensleydale Drive, Camberley, Surrey, GU15 1SP

A refurbished four bedroom detached house, situated in a cul-de-sac on the popular Heatherside development, within walking distance of Heather Ridge, Ravenscote and Tomlinscote schools, offered for sale with no onward chain. The extensive ground floor accommodation comprises of a living room, dining room/family room, study and kitchen, plus a shower room and cloakroom. On the first floor there are four well proportioned bedrooms, plus a family bathroom.

Price: £525,000

### Overview

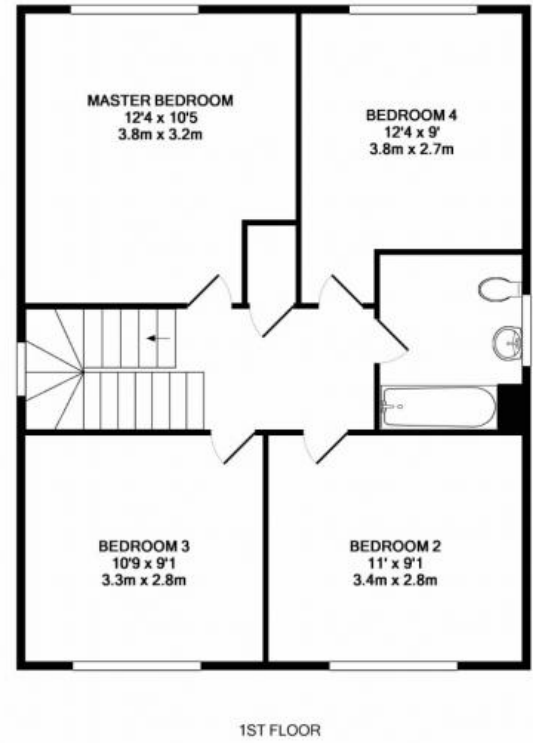
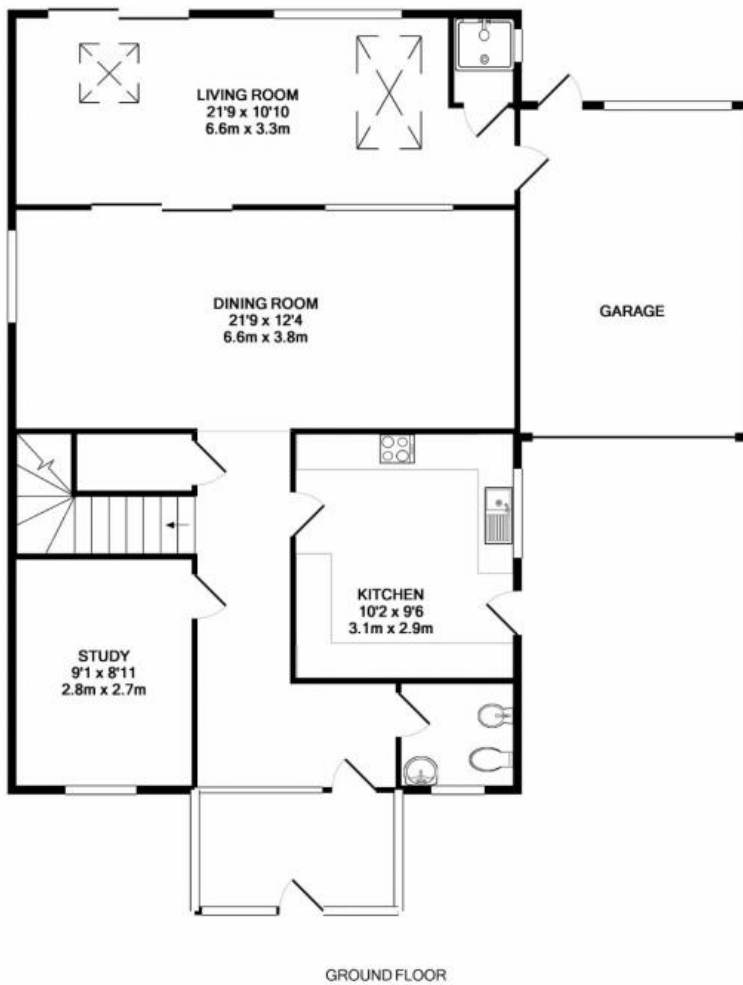
- Four Bedrooms
- Detached
- Heatherside Development
- Driveway and Garage
- Living Room
- Dining Room
- Study
- EPC Rating: D (64)
- No Onward Chain
- Freehold



Call: +44 (0)1276 685544



Call: +44 (0)1276 685544



Whilst every attempt has been made to ensure the accuracy of the floor plan contained here, measurements of doors, windows, rooms and any other items are approximate and no responsibility is taken for any error, omission, or mis-statement. This plan is for illustrative purposes only and should be used as such by any prospective purchaser. The services, systems and appliances shown have not been tested and no guarantee as to their operability or efficiency can be given.  
Made with Metropix ©2019