

Call: +44 (0)1276 685544



Woodlands Road, Camberley, Surrey, GU15 3NA

A spectacular example of a detached Edwardian house retaining many period features situated on a mature 0.35 acre plot within walking distance of Camberley Town Centre and railway station. The property has been much loved and improved by the current sellers to incorporate large open plan kitchen/breakfast room with doors accessing a beautiful covered Victorian style veranda overlooking the rear garden. There is also a formal living room, dining room, study and family room on the ground floor. On the first floor there is a master suite with dressing room, freestanding bath and en suite shower room. There are three further well proportioned bedrooms plus a refitted family bathroom. On the second floor there are two double bedrooms plus a refitted shower room.

Price: £950,000

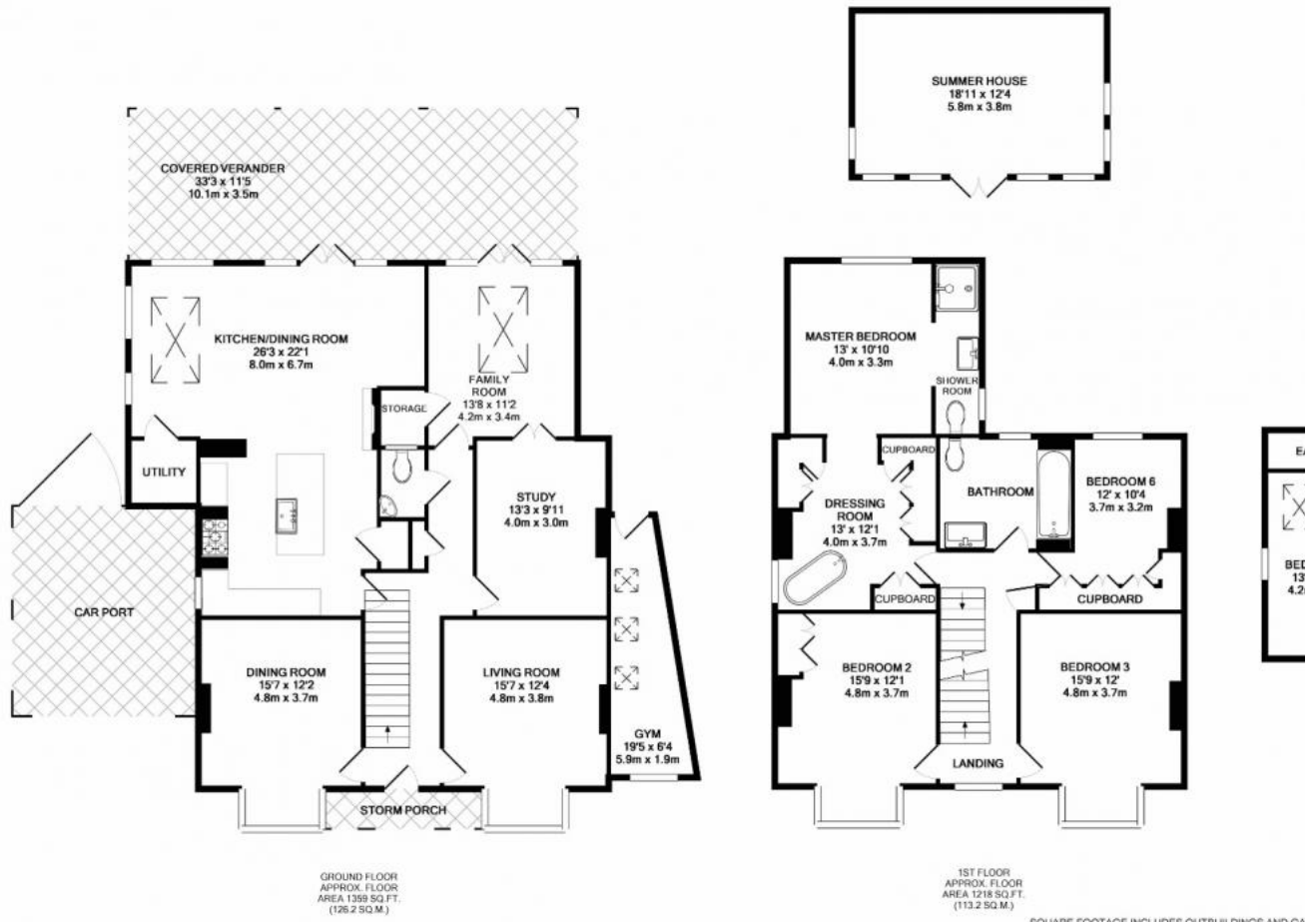
Overview

- Six Bedrooms
- Detached Edwardian House
- Approx 0.35 Acre Plot
- Excellent Condition
- Many Period Features
- Large Open Plan Kitchen
- Covered Victorian Style Veranda
- EPC E (46)
- Freehold

Call: +44 (0)1276 685544



Call: +44 (0)1276 685544



GROUND FLOOR
APPROX. FLOOR
AREA 1359 SQ.FT.
(126.2 SQ.M.)

1ST FLOOR
APPROX. FLOOR
AREA 1218 SQ.FT.
(113.2 SQ.M.)

SQUARE FOOTAGE INCLUDES OUTBUILDINGS AND GARAGE
TOTAL APPROX. FLOOR AREA 3579 SQ.FT. (332.5 SQ.M.)
Whilst every attempt has been made to ensure the accuracy of the floor plan contained
of doors, windows, rooms and any other items are approximate and no responsibility is
omission, or mis-statement. This plan is for illustrative purposes only and should be used
prospective purchaser. The services, systems and appliances shown have not been built
as to their operability or efficiency can be given.
Made with Metagor 02013