

Call: +44 (0)1276 588100



Apartment 10 Kings Court, Camberley, GU15 3FL

ORCHARD BY BRIDGES - Available End of January ****NO TENANT SET-UP FEES****
An opportunity to live in a well presented first floor TWO DOUBLE BEDROOM apartment situated in the centre of Camberley. The property is located within WALKING DISTANCE of local amenities and the TRAIN STATION. Accommodation includes an open plan lounge / kitchen area, bathroom and TWO DOUBLE BEDROOMS. Internally the fittings are of a high standard. Benefits include Lift Access and Telephone entry system. UNFURNISHED. No Parking Onsite. EPC RATING D

Price: £925 PCM

Overview

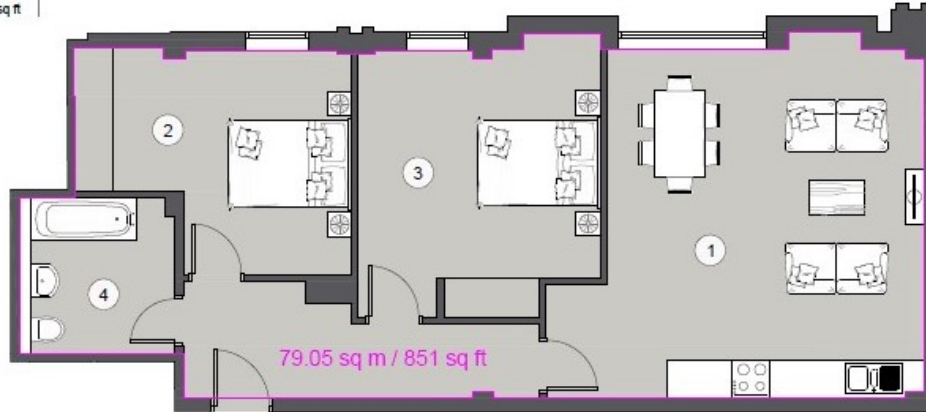
- Two Bedroom Apartment
- Available Mid January
- Open Plan Lounge/Kitchen
- Fully Fitted Kitchen With Appliances
- EPC 65 (D)
- Video/Telephone Entry System
- Town Centre Location
- Unfurnished

Call: +44 (0)1276 588100

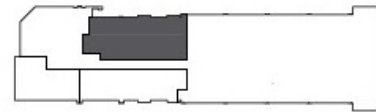


Call: +44 (0)1276 588100

Type **A**
(DA)
2 bed apartment
79.05 sq m / 851 sq ft



1. Living Room / Kitchen	18'-7" x 10'-10"	5.65 m x 5.13 m
2. Bedroom 1	14'-8" x 11'-11"	4.47 m x 3.64 m
3. Bedroom 2	14'-2" x 12'-11"	4.33 m x 3.93 m
4. Bathroom	8'-3" x 8'-3"	2.52 m x 2.52 m



The developer engages in continuous product development and reserves the right to alter any part of the development specification at any time as necessary and without notice. The information in this document is indicative and is intended to act as a guide only as to the finished product. These particulars should not be relied upon as accurately describing any of the specific matters described by any order under the Property Misdescriptions Act 1991. No responsibility is accepted by the developer for any errors or omissions and the above information and marketing material does not constitute or form part of any contract, or warranty. The dimensions given on plans are subject to variations and are not intended to be used for carpet tiles, appliance sizes or items of furniture.