

Call: +44 (0)1276 588100



Flat 8, Raleigh House, Camberley, GU15 3BZ

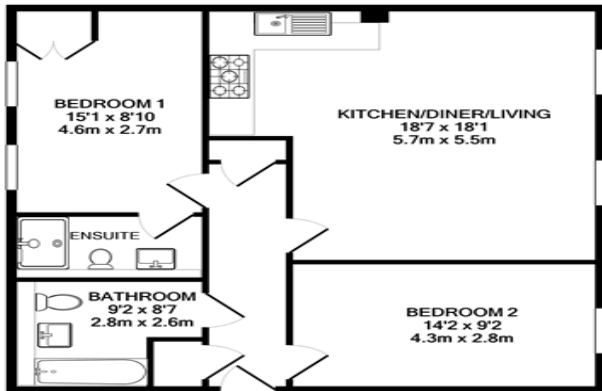
ORCHARD BY BRIDGES - Available End Of September. *NO TENANT SET UP FEES* Set within the popular 'Portesbery Square' and built to a very high specification by CALA Homes in 2017, this truly stunning two double bedroom town centre apartment is situated within a short walk from the popular shopping malls, restaurants and Camberley train station. Accommodation comprises of two double bedrooms, an open planned kitchen and living area, bathroom and en suite.

Price: £1,200 PCM

Overview

- Available End of September
- Two Bedrooms & En Suite
- Second Floor Apartment
- EPC B (84)
- Town Centre Location
- Constructed in 2017
- Allocated Parking
- Small Block of Nine Apartments

Call: +44 (0)1276 588100



TOTAL APPROX. FLOOR AREA 749 SQ.FT. (69.6 SQ.M.)

Whilst every attempt has been made to ensure the accuracy of the floor plan contained here, measurements of doors, windows, rooms and any other items are approximate and no responsibility is taken for any error, omission, or mis-statement. This plan is for illustrative purposes only and should be used as such by any prospective purchaser. The services, systems and appliances shown have not been tested and no guarantee as to their operability or efficiency can be given.
Made with Metropix ©2020

